

a - â



un canard



un âne

ail - aille



un éventail



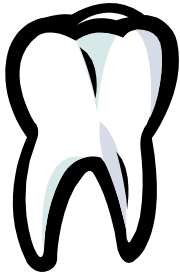
une médaille

an - en - am

em - aon



un fantôme



une dent



un tambour

(suite de la maison du son [ã])

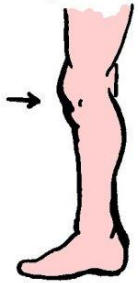


une tempête



un paon

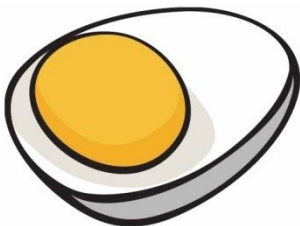
e - eu - œu



le genou

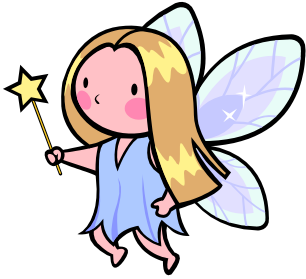


un feu

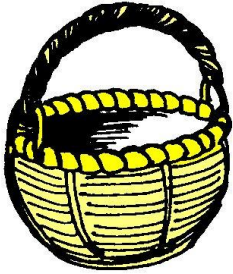


un œuf

é - er - ez



une **fée**



un **panier**



un **nez**

è - ê - ë

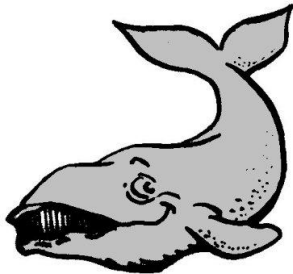
ai - ei - e - et



un zébre



une chaise



une baleine

(suite de la maison du son [ɛ])



une fête



Noël



la Terre

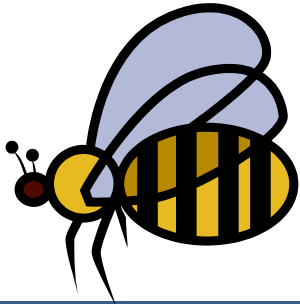
(suite de la maison du son [ɛ])



eil - eille



le soleil

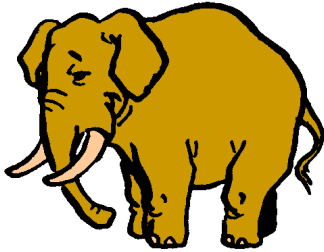


une abeille

f - ph



une fourmi

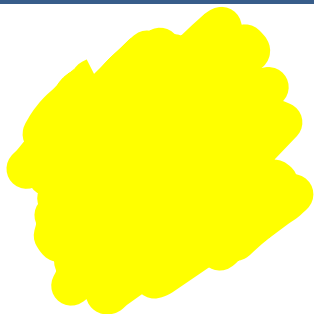


un éléphant

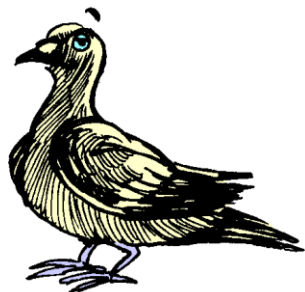
j - g - ge



une girafe



du jaune



un pigeon

g - gu

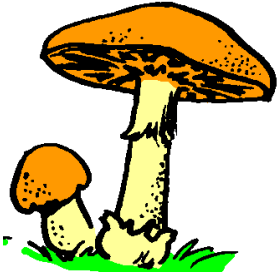


un gâteau



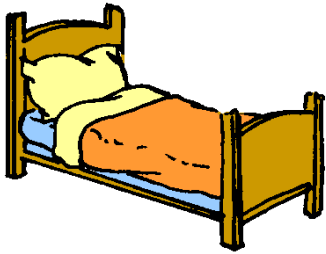
une guitare

gn

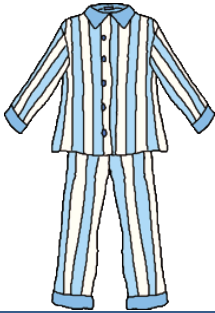


un champignon

i - y



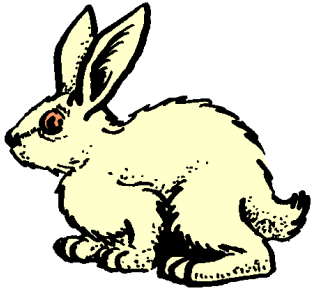
un lit



un pyjama

in – ain – ein

im – en – un



un lapin

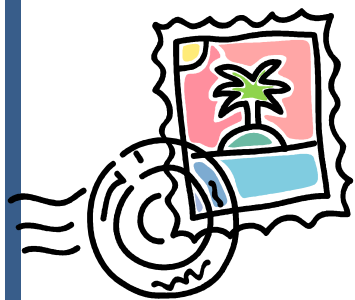


une main

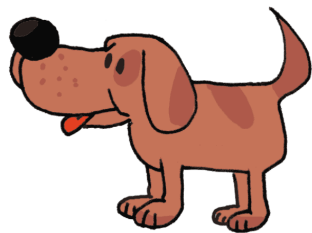


une ceinture

(suite de la maison du son [ɛ̃])



un timbre



chien

1

un

k – c – qu

q – ch – cc



une **c**arotte

4

quatre



un **k**oala

(suite de la maison du son [k])



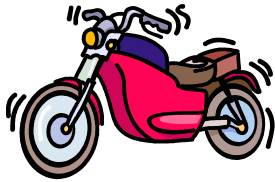
un coq



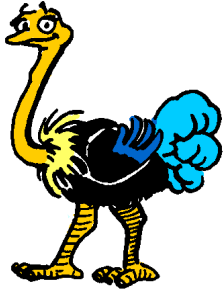
une chorale

accrocher

o - au - eau



une moto



une autruche



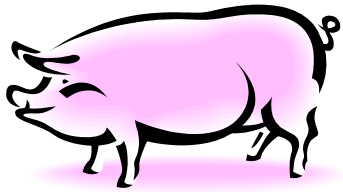
un cadeau

Oi



une étoile

on - om

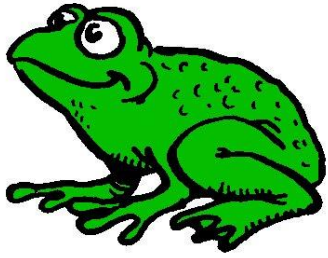


un cochon



un pompier

ouille



une grenouille

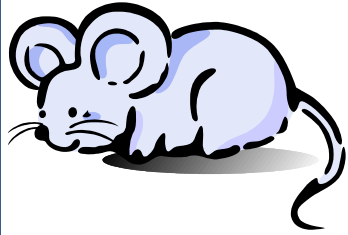
OU



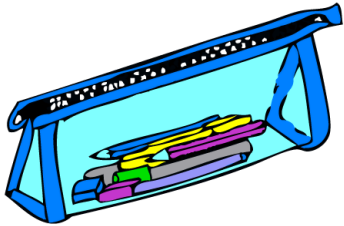
un loup

S - SS - C

ç - t - x



une souris

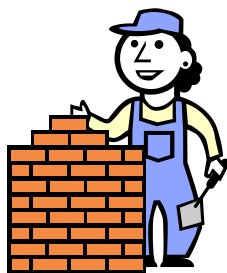


une trousse



un citron

(suite de la maison du son [s])



un maçon

$$\begin{array}{r} 4 \\ + 6 \\ \hline \end{array}$$

une addition

10 dis

Z - S - X



un trésor



un zèbre

10^{ème} le dixième

X - CC



un taxi



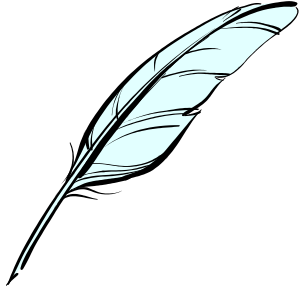
un accident

X



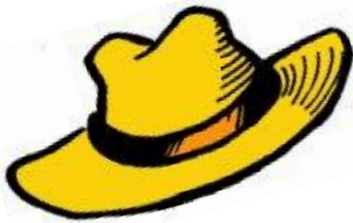
un xylophone

u



une plume

ch



un chapeau

b



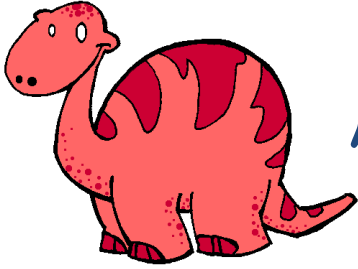
un ballon

p



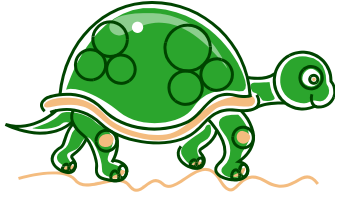
un papillon

d



un **d**inosaure

t



une tortue

V



un vélo